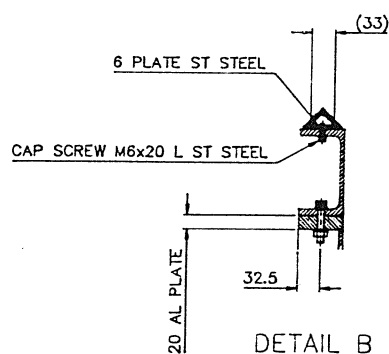


DETAIL 'D'

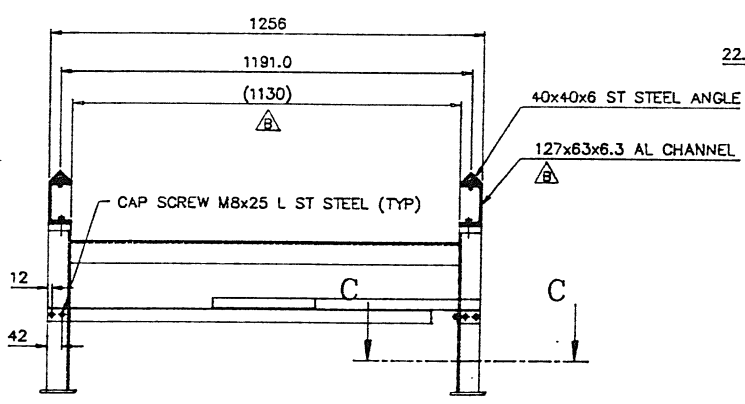
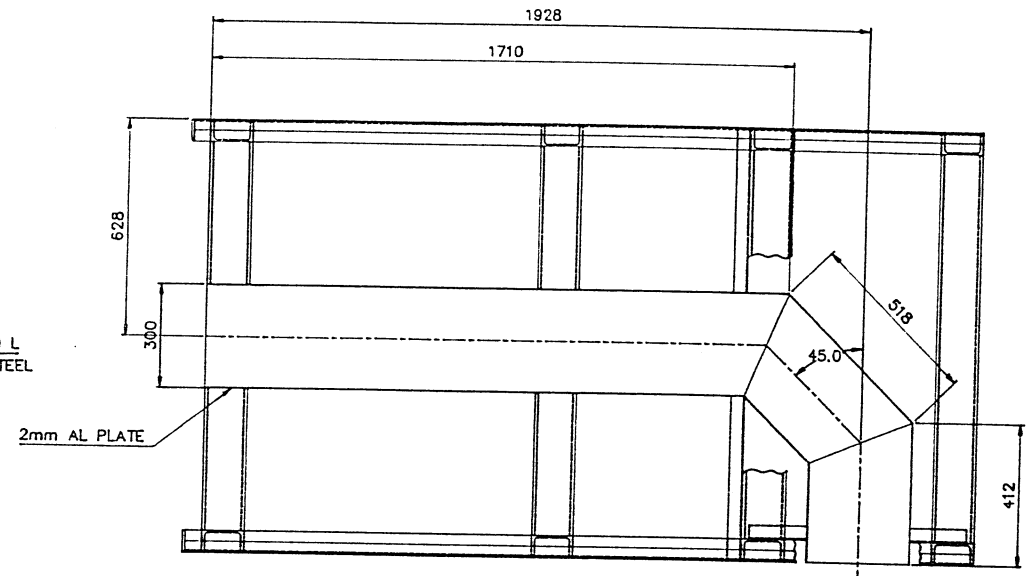
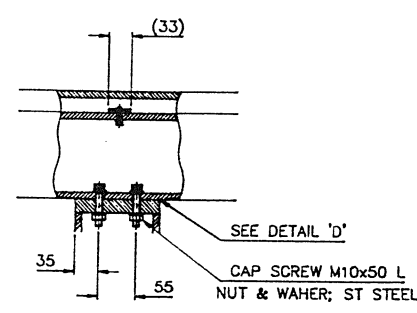
SCALE 1:1

TO ENSURE THAT RAIL IS HORIZONTAL, THICKNESS OF SHIM TO BE DETERMINED ON FINAL ASSEMBLY

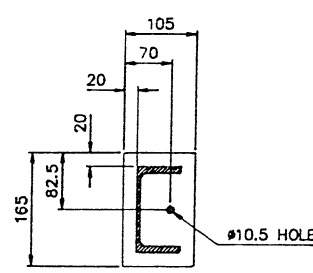
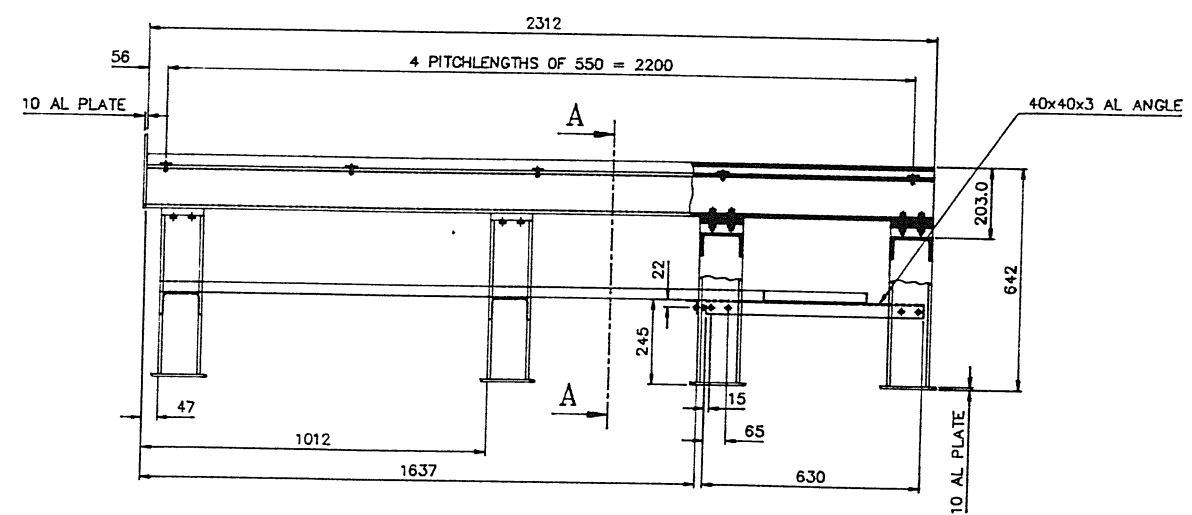
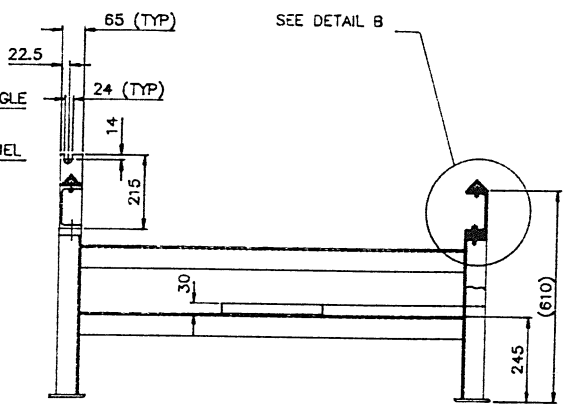


DETAIL B

SCALE 1:5



SECTION A-A



SECTION C-C

SCALE 1:5

IST	DRAWING STATUS	ACTIVE	SIGN	DATE
INFORMATION ONLY				
FOR 3rd PARTY APPROVAL				
PERMIT MATERIAL ORDER				
FOR MANUFACTURE				
AS BUILT				
SUPERSEDED				

NOTES (UNLESS OTHERWISE STATED)										MATERIAL:		GENERAL TOLERANCES	
1) REMOVE ALL BURRS & SHARP EDGES TO 0.5mm MAX.										ALUMINUM B615-TF		Y ±0.5	
2) SCREW THREADS TO ISO 281										ST STEEL 304		XX ±0.2	
3) SURFACE TEXTURED (Ra TO ISO 1302)												XXX ±0.05	
												ANGLES ±1°	
4) ALL INTERNAL RADI 0.3 MAX.													
125x65 - 127x63 : 1126 - (1130)										B		WB	
A										-		WB	
REVISION DETAILS										ISS		C/NOTE	
DRAWN										CHECK		APPR	
P.OFF.										DATE		VTFM-20B	
92-04-22										TO SABS 0111		92-03-20	
DISC NO/FILE NAME										DRG NO : VTFM-60000-122		SHT 1 OF 1	
SCALE : 1:10												WHEN PLOTTED ON UNLESS OTHERWISE STATED	
												A1	